

PCC PATHWAYS

THE FIRST YEAR

Pasadena City College created PCC Pathways to ensure that students identify and complete their academic goals in a timely manner. The program guarantees students full schedules – including difficult to get English and math courses – in the fall and spring semesters of their first year and provides them with the critical support they need outside of the classroom.

JAM

PCC's one-week summer bridges connect innovative instruction with engaging orientation-to-college activities. Jams are the important entry point to the first year of the PCC Pathways program.

COLLEGE 1

This first year seminar course provides students with a rigorous academic experience in their first semester of college. Students exercise their reading, thinking, and research skills while developing the academic and personal behaviors necessary to succeed in college.

"ONE BOOK, ONE COLLEGE"

In the fall of their first year, students read and discuss a book with diverse communities on and off campus. The program culminates with guest speakers and related events as well as a Student Conference, which celebrates first year student work.

COUNSELORS

Pathways students have access to dedicated counselors who have been trained to handle the special needs of first year students.

COACHES

Coaches serve as advisors and mentors to Pathways students. They closely monitor students' academic progress and direct them to college resources.

TUTORS

Pathways tutors are typically former Pathways students who have been trained to work with students throughout the academic year.

3-YEAR PCC PATHWAYS DATA

2012-2013 COHORT	PATHWAYS	NON-PATHWAYS
Persistence (Fall to Fall)	61%	28%
Average Credits Completed	52.2	31.5
Transfer-Prepared Status	28%	13%
Degree Attainment	12%	5%

UCLA SRM Evaluation Group, 2015 (Pathways n=620, non-Pathways n=4,035)

PCC PATHWAYS

THE SECOND YEAR

In the second year, PCC Pathways students continue to explore career options, commit to an academic major, meet regularly with coaches and counselors to complete their academic goals in a timely manner, have access to a Pathways study center, and develop leadership and social engagement skills on campus.

JAM

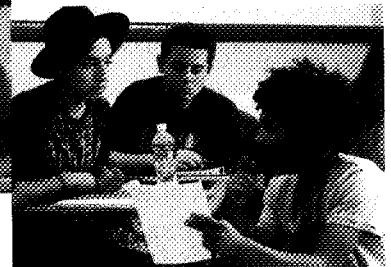
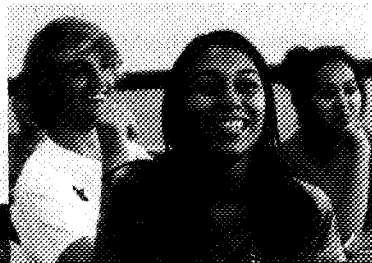
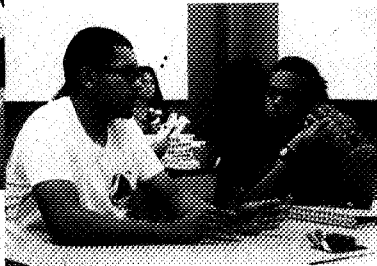
A 3-day orientation to the 2nd year of college that aims to increase student self-efficacy and motivation while in college.

LEADERSHIP DEVELOPMENT

Pathways Connect
ePortfolio Tutoring
Volunteer Service
Speech Tournament

ePORTFOLIO

Career Exploration
Learning & Metacognition
Leadership Reflection
Goal Revisions



COUNSELORS, COACHES, AND TUTORS

Pathway students have access to counselors, who help them identify a major and complete their academic goals; coaches, who monitor academic progress and direct students to resources; and tutors, who work with students enrolled in math and English classes.



For more information, visit: www.pasadena.edu/pathways